



**THE GOLF NEWS
IN BRIEF**

By **HERB GRAFFIS**

Rapid increase of golfers in Allentown, Pa. has given impetus to local drive for muni course. Annual report of Allentown's Irene D. Welty, superintendent of recreation, emphasizes the city's need. . . . Expansion of Cheyenne, Wyo. Airport GC from 9 to 18 holes may be ready for spring play says M. W. Walker. . . . Parkhills GC, Altoona, Pa., has voted expansion program, boosting present 9 to 18 holes and building new clubhouse.

Pro Roy Bronsdon, 1934 holder of Mass. Open crown, leaves Brae Burn CC, Newton, Mass., for Greenwich CC, Conn., April 1. Bronsdon takes spot vacated by death of Robert M. Thomson after 19 years' service. . . . Beaver Lake GC, Asheville, N. C., is enlarging first story of clubhouse to expand locker room and bar. Club is also replanting putting greens with bent grass. . . . St. Joseph, Mo., Muni Fairview GC enjoyed its biggest year in 1946. . . . Ocala, Fla. GC (muni) plans big clubhouse to double as city recreation center. City

fathers promise to put up 3 dollars for every one raised by citizens. . . . Pro Monie Weiser has been rehired at Lincoln Hills CC, Milwaukee region, for next year and Paul Jensen retained as gkpr.

Lawrence Brook CC, New Brunswick, N.J. was completely razed Jan. 23rd, with damage estimated at \$50,000. . . . Clubhouse of Murfreesboro G&CC, Murfreesboro, Tenn., totally destroyed New Year's day. Loss, \$12,000. . . . Four county-owned GCs in White Plains, N.Y. are raising fees this year to meet the rising cost of labor and materials. Observers expect fees to go from \$1.00 to \$1.25 weekdays, and from \$1.50 to \$2.50 on Sundays and Saturdays. . . . One way of coming back fast after a damaging fire was demonstrated by the Rumson CC, Rumson, N.J. Purchasing the large southern colonial type mansion of Edward Scudder, Rumson, the club cut it into sections and floated it by barge to the country club site, where it was put back together again.

Hebron, Neb. plans a clubhouse this year, made of two purchased CCC barracks joined in T formation. . . . Catawba CC, Hickory, N.C. with 9 holes in play and a second 9 seeded, plans construction this season of at least one unit of its proposed new clubhouse. . . . West Palm Beach muni GC has been completed, but no funds are yet available for clubhouse construction. . . . Waverly, N.Y. Shepard Hills G&CC is beginning construction on \$20,000 addition to its locker room space and a grill.

Dr. Cary Middlecoff, the Tennessee dentist, has answered the call of cash golf competition and has turned pro. Middlecoff sportingly announced his action early and cut himself off from a place on the Walker Cup team.

New pres. of Westchester County Golf Assoc. (New York Met. district) is Eugene L. Larkin, Wykagyl CC. He succeeds Earl Ross, who held the post 5 years. Larkin last year inaugurated the Turf Tournament held in all clubs of metropolitan N.Y.

William F. Gordon Company

GOLF COURSE CONSTRUCTION ENGINEERS

DOYLESTOWN,
Penna.

BALA-CYNWYD,
Penna.

(ASSOCIATED WITH)

DONALD J. ROSS, GOLF ARCHITECT, PINEHURST, N. C.
and

J. B. McGovern, Associate, Wynnewood, Penna.

KILL WEEDS

with

BEAN GOLF SPRAYERS



Kill weeds quickly, safely, surely with efficient Bean Golf Sprayers. They're designed and built for the job, with powered agitators for mixing materials, quick-acting regulators that hold the pressure where you want it, and powerful pumps that get the spray onto the weeds faster and more thoroughly.

ALL-PURPOSE SPRAYERS

Attach a Bean Spraymaster gun to the sprayer and it's ready to spray flowers, trees and shrubs with fertilizers, fungicides, insecticides. Efficient for fire-fighting, spray-painting, whitewashing.

TUBA-LITE BOOMS

Lightweight, 20-nozzle Tuba-Lite booms attach to front of tractor: give maximum coverage with minimum of drifting fog. Boom wings swing back on contacting trees or other obstacles. Ask about the Bean Lawn Protector — a new type applicator for safe spraying with 2, 4-D near flowers, shrubs or trees. See your dealer, or write for catalog.

JOHN BEAN MFG. CO.
DIVISION OF FOOD MACHINERY CORPORATION
LANSING 4, MICHIGAN
Dept. 55

district to raise funds for experiments in better turf and the employment of an expert to serve the various clubs of the area. . . . Belle Plaine, Ia. CC to hire pro-gkpr. for club promotion. . . . Vermillion, S.D. munny GC has installed trap shooting range.

Eagle Grove (Ia.) CC, launching expansion program with purchase of 90 additional acres. . . . Honesdale GC, Honesdale, Pa. buying additional green equipment in modernization step. . . . Algona CC, Des Moines, Ia., has signed 3 year contract with Ralph Miedke and his wife to manage the club.

The Biltmore GC, Miami, Fla., now a part of the army's Pratt General Hospital, still allows a limited number of non-military guests to play on payment of the \$2.50 green fee. Of the 900 patients at Pratt, 350 play golf regularly. Group instruction classes are held daily and individual instruction given patients desiring it. . . . Interesting note is the stress laid on the Rules of Golf, taught the patients days before they begin swinging clubs. . . . Seven patients have already worked their game into the below-80 class, and 20 of duty personnel play regularly in 70s. . . . Maj. E. H. Alsup, chief of reconditioning service, states, "It is remarkable how a game like golf can snap a patient out of the doldrums.



All Your Mowers Precision Ground with a Modern Mower Sharpener

ANY Mower EASILY Sharpened (5-inch Edger or 36-inch Power Mower) in 10-20 minutes with a MODERN LAWN MOWER SHARPENER. NO DISMANTLING . . . Handles, Rollers, Wheels AND Motors need NOT be removed to sharpen ANY Mower. NO hand FILING needed! . . . MODERN precision grinds to the very ends of BOTH left or right reel blades. SAME brackets hold bottom knife for scissor-sharp MATCH! NO EXTRA ATTACHMENTS NEEDED! Order NOW! ONLY \$241.50 (less motor) F.O.B. Pasadena. (1/3 or 1/4 H.P. single phase motor recommended.)

MODERN MANUFACTURING COMPANY
154 N. Fair Oaks Pasadena 1, California

That is what we try to sell the patients here."

Frank True in the New York Sun points out that although Long Island boasts more golfers than any similar area in the world, buying a membership in some clubs today is about as simple as obtaining a barrel of sugar. . . According to True there are enough unattached golfers with money in hand in the area now to fill the rosters of 10 new clubs. Similar conditions prevail in other districts. . . Commonwealth CC, Boston district, has been awarded the 39th Mass. amateur golf championship in tribute to its 50th anniversary. . . Date will be around July. . . Billy Corcoran of Mass. Golf Assn. says that their famed handicapping system may be adopted by Swedish golfers. . . The Swedes have written for complete data.

St. Andrews difficulties will put the American Walker Cup Team at a disadvantage in the revival of the Walker Cup Matches May 16 and 17, predicts Dai Rees. . . Of the Walker Cup players he has observed, Rees believes that Bud Ward, Amateur champ in 1939 and 1941, possesses the sort of game best suited to do well on the Caledonian course.

Work on a 7 million dollar resort begins next summer at Deep Creek, Md., and will



BURKE-BUILT Climb-A-Round

Send for 60 Page Catalog H

OF BURKE-BUILT

PLAYGROUND EQUIPMENT

including: Climbing Structures, Swings, Slides, See-Saws, Merry-Go-Rounds, Turning Bars, Horizontal Ladders and many other items.

BURKE-BUILT playground equipment has the approval of park and playground officials throughout the country . . . it is designed to give maximum recreation enjoyment in safe healthful play.

THE J. E. BURKE COMPANY
FOND DU LAC WISCONSIN

March, 1947



DAVIS' Grass Seed

The severe months of winter have left their destructive marks on your greens and fairways. With Spring rapidly approaching, the time for planning turf rejuvenation is at hand.

Davis' Grass Seed is the proven formula that will give your course the magic benefit of "show turf." Send coupon for our complete price list which describes a full line of supplies and equipment you will need for seeding and general maintenance.

MAIL THIS COUPON NOW

Please send your complete price list describing supplies and equipment.

NAME

ADDRESS

CITY ZONE STATE

George A. Davis Inc.

5440 Northwest Highway, Chicago 30, Ill.

VELVET SMOOTH GREENS



BEAUTIFUL FAIRWAYS THICK UNIFORM TURF **HYPER-HUMUS**

Ideal for ANY Soil

HYPER-HUMUS is the natural soil builder and conditioner. No matter what kind of soil you have, HYPER-HUMUS will quickly put it into the best possible condition.

Used on many of the finest courses in the country.

- A pure black humus at the proper stage of decomposition and processing.
- Naturally impregnated with lime.
- Uniform in quality.
- Weed-free.
- Supplies beneficial bacteria.
- Moisture holding.
- Produces immediate results.
- Easy to apply.

Write us about quotations and deliveries. Let us help you with any special problem.

HYPER-HUMUS CO.

Box G

Newton, N. J.



Hyper-Humus
TRADE MARK REGISTERED

include a 500-room hotel, 150 luxurious cottages, golf course and swimming pool. The project is to be located on a 2,000-acre tract of land acquired recently on 90 year lease by Kenstro-Clarke Management Corp. of Conn.

Garden City, Ks. CC begins \$17,000 construction on enlarged and modernized club house as soon as material is available. . . . Jackson, Miss. is building new course near Hawkins Municipal airport. . . . Hollywood (Fla.) GC, reports Mgr. Frank Reardon is at least a third ahead of last year's business. . . . Tony Manero is new pro at Ferncrest G&CC, Harrison, N.Y. . . . W. C. Sherwood, for 30 years pro at Memphis CC, retired March 1 at age 66. His successor is Pat Abbott, winner of the 1936 national public links title and runner-up in 1938 and 1941 National Amateur.

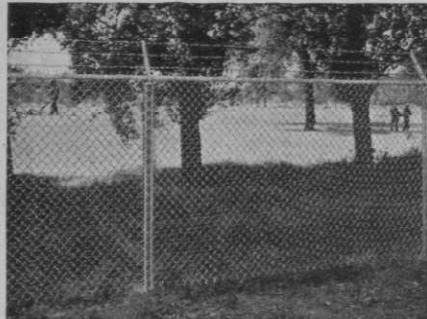
What William D. Richardson writes in New York Times is a well-deserved bouquet to grnkprs.—“Those unsung heroes of golf, the fellows who make it possible for the Nelsons, Hogans, Sneads, Mangrums, Demarets and others to make all those sensational scores in the low 60s, have made courses today several hundred per cent better than they were 20, even 10 years ago. . . They, aided by the Green Section of the USGA and kindred agencies, are mainly responsible.”

Sam Snead pretty well summed up opinion of many pros regarding tournament play when he stated he disliked promising to appear at a tournament several months ahead only to find when the time comes that he cannot appear without sacrificing something. . . Often other tournaments come up which offer far more money but which cannot be accepted because of long-standing commitments made for tournaments far ahead in the future. . . . Another big league ball player who finds skill in one sport carries over into the other is Yankee third baseman Bill Johnson, an avid golfer on Augusta, Ga. munny course. . . The course, entirely rebuilt since the war, is breaking all its attendance records. . . Hugh Carter, Atlanta, secy. Ga. State Golf Assn., announces the 25th annual men's amateur championship will be held in Columbus, Ga., July 22-26.

Salt Lake City's Parks Commissioner, Fred Tedesco, is recommending reappointment of city's 3 pros—Tom McHugh to Nibley Park, Jerry Henderson to Forest Dale, and Dick Kramer to Bonneville. . . Tedesco revealed receipts at the 3 courses were almost exactly doubled in 1946 over the preceding 12 months. . . . George Schneider, Utah pro and v.p. of PGA, will be out of the game until early spring after cracking a vertebra in a car accident when he, Lloyd Mangrum and Mrs. Mangrum

PAGE -Since 1883 FENCE

• AMERICA'S FIRST WIRE FENCE •



Choose the Best Metal

● Protect your club and protect your investment. Erect a sturdy, long-lasting Page Chain Link Fence, made of the metal that is best for your own locality. Page provides a choice of *four* superior metals. And it offers the plus value of engineering and erection by an experienced and locally owned firm. Write for illustrated information and name of the local Page Fence erecting firm nearest you. Address PAGE FENCE ASSOCIATION, Headquarters: Monessen, Penn.

A PRODUCT OF PAGE STEEL & WIRE DIVISION
AMERICAN CHAIN & CABLE • BRIDGEPORT, CONN.

RANGE BALLS RANGE CLUBS

CLUBS TEES MATS

Miniature Supplies

PUTTERS and BALLS

DRIVING RANGE SPECIALTIES

326 S. Plymouth Court
CHICAGO 4, ILL.

were forced off the road en route to El Paso from Albuquerque. . . Mangrum and his wife were uninjured. . . George predicts a new PGA agreement ready for operation May 1 which will bind pro golfers to appear in tournaments and offer protection, too, for players.

Byron Nelson writes he wouldn't be a bit surprised if Bobby Locke (S. Africa's current opponent of Sammy Snead) came over here some time this year. . . Bobby has become heavier during the war and weighs about 18 pounds more than he did when Byron saw him in England in 1939. . . First place in money-winning for the year is still held by Ben Hogan, whose total reached \$6,385.83 at the 21st Texas open last month. Demaret was second high at that time with \$6,053.22. . . A new 18 hole course for Montgomery (Ala.) CC, will be ready for play soon.

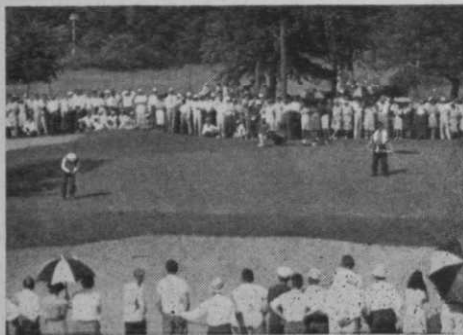
New president of Columbus (Ohio) District Golf Assn. is Herb Lape, Jr., Columbus CC's official who engineered last year's \$10,000 Invitational with great success. . . 18 hole Chippewa CC, Toledo, O., has been purchased by brothers George and Ted Wakely. . . George, who has been Chippewa's pro for past 9 years, will handle the pro shop. Ted will be course supt., and both will help Mrs. George in the clubhouse. . . Alliance (Neb.) CC has been purchased for \$12,500 by B. B. Wright, McCook, Neb., who assumes operation May 1. . . Re-opening of the westerly 9 holes of former Altadena (Calif.) GC for public use looks certain. . . County Recreation Commission is placing sufficient funds in the year's budget to restore the course to its normal condition. . . Jack Anderson, Pro-Mgr. Dubuque (Ia.) CC, has resigned to become grds. supt. at Cedar Rapids (Ia.) CC.

Pacific Northwest is planning a 1948 Gold Golf Trail of cash tournaments to bring stars of the fairway into the area August or September of next year. Portland and Spokane have already put signatures on agreements. Seattle is still undecided at this writing.

Salina (Ks.) CC has busy year scheduled. . . The club has been awarded the state Amateur, Women's and Senior's championships. . . The Amateur is set for June 9-16. . . Salina CC is enlarging its locker and shower depts. to care for increased play. . . Pro Jack Wilson forecasts biggest year the club ever has had. . . Northview CC, Salina, has built a fine new clubhouse. . . Northview is cooperating with the Salina CC to get record entries, publicity and entertainment programs for the 3 Kansas state tourneys to be held in the city.

Wichita (Ks.) CC's big tournament of the year is to be played June 17-23. . .

GIVE YOUR COURSE THAT INVITING LOOK!



See how **VIGORO**
helps produce velvety
greens and fairways
that attract more golfers

● Thin, spotty fairways and greens never brought crowds to a golf course. It's rich, thick turf that makes playing a joy, brings golfers back time and again.

That's why courses from coast to coast find it good business to feed Vigoro regularly. Vigoro, complete, balanced plant food, is the result of a quarter-century of scientific research. It supplies in proper proportions the food elements all grasses need.

Why not investigate the benefits Vigoro-feeding can bring to your customers. We'll be glad to send you information without obligation. Ask for it now.

SWIFT & COMPANY
Plant Food Division
U. S. Yards
Chicago 9, Ill.



Manhattan, Ks., replacing sand greens with grass. . . . Russell, Ks., campaigning for municipal golf course.

Royal and Ancient GC of St. Andrews has announced that 8 of Britain's foremost "working class" golfers will be included in trials for the Walker Cup team. . . . U. S. Walker Cup team will play in the Masters' at Augusta (Ga.) National GC first week in April.

Lou Jennings, former Portland, San Francisco and Oregon State champion, has joined the Spalding organization in the Pacific Northwest after 4 years in the Navy. . . . Spalding's Research laboratory has on file more than 2200 golf patents.

Augusta (Ga.) CC has spent approximately \$100,000 on improvements during the past year. . . . Augusta National GC has built two elaborate bachelor's quarters buildings and several cottages for members' rental. . . . Nearly \$1,000,000 is being spent in rehabilitation of the famed Belaire (Fla.) golf hotel and courses. . . . The AAF turned the establishment back to private ownership. . . . Tommy Harmon, pro at Montclair (N.J.) last summer is Belaire's pro.

Smiley Bell is increasing Armour GC (Kansas City district) from 18 to 36 holes. . . . New greens are Arlington and Old Orchard. . . . Smiley says end of war eliminated play of "graveyard shift" workers who came to course direct from war plants and play has settled down to routine schedule. . . . Tony Owens, successful writer, has signed up leading pro tennis players for tournament schedule. . . . There'll be fewer events than in 1946. . . . Owens has made a tie-up with Hearst and other newspapers for pro tennis tournament promotion.

Marion Mendenhall now is supt., Lincoln (Neb.) CC. . . . Marion was at Triple A, St. Louis, right after he got out of the Army. . . . Ernest Jones, teaching at Spalding store in N.Y., has calendar packed tight and a long waiting list.

Jock Hutchison shot 145, one over par, on the PGA Dunedin (Fla.) course, to win 1947 PGA Seniors' championship. . . . The Glenview veteran replaced Eddie Williams as the Seniors' title holder. . . . John Kieran of "Information Please" fame and Grantland Rice, who edits the sports section of John's 1947 "Information Please" Almanac, need to get together on corrections in the golf part of their book. . . . On page 874 Jock Hutchison's name is incorrectly spelled "Hutchinson". . . . On the same page Hutchison and Armour are cited as having won the British Open after they moved to the U. S. . . . Jim Barnes, who won the British Open in 1925, also was a U. S. resident, having won the U. S. Open in 1921 and the U. S. PGA in 1916 and 1919.

BI-CAL

A Mixture consisting of
65% Calomel,
32% Corrosive Sublimate
and
3% Activating Agent

CALOMEL
•
BICHLORIDE
OF
MERCURY

METALSALTS
CORPORATION

27 FIRST AVENUE,
PATERSON 4, N. J.

Paterson: ARmory 4-4422
New York: PENnsylvania 6-2626



Salt Lake City CC gets Western Open for Aug. 28-31. . . . \$12,500 event is a feature of Utah's Centennial. . . . The Western Open with \$2,500 more prize money than previously, will be played in 4 days of 18 holes each. . . . Tests made on USGA ball testing machine at Armour Research Foundation in Chicago show velocity of balls about same as before the war. . . . 85% of plans submitted to USGA concerning clubs for score-cutting relate to the putter.

A fellow usually thinks he's doing all he possibly can to be green-chairman of one club. . . . But Clive H. Helfrich is green-chmn. of 2 fine clubs, Plum Hollow and Detroit GC. . . . The Niblicks, 3 former caddies at Olympia Fields CC (Chicago dist.) who made their debut as big-time entertainers 10 years ago on a Major Bowes amateur hour, now are one of the featured cafe acts. . . . Bob Hope is owner of a driving range being built near the Lakeside GC at Hollywood.

Robt. S. Hulbert, pres., Chicago District GA, has announced the promotion of Miss Carol McCue to Public Relations Counsel for the association. Miss McCue has been previously mentioned in the columns for her outstanding service to golf. . . . Pendleton (Ore.) CC has assured members top quality service in its operating departments by signing Jack White, formerly at LaPorte, Ind., as mgr; Freddie Bolton, from Fayetteville, N.C. as pro and Sam Zook from Portland, Ore., as gkpr. Jack did a great job in promoting golf among servicemen as Sgt. White during the war. Bolton joined the winter circuit after returning from 33 mos. overseas. . . . Letter from George Fraser who published Fraser's International Golf Guide until he sold the property a few years before the war to a N.Y. publisher. George made a host of friends in the States and would like to be remembered to them. He is busy publishing a string of successful Canadian trade directories.

Jack Metz has been signed as pro-mgr. by Missoula (Mont.) GC. . . . Mrs. Metz engaged as cateress. . . . Club is adding 9 holes, watering system and new kitchen and private dining rooms to strengthen its claim to being the state's "outstanding" club. . . . Bismarck (N.D.) CC to play on first 9 of its 18 this year. . . Robert Bruce Harris designed the course. . . Clubhouse construction will be started this spring. . . C. J. Reff is pres. of the new club which has 250 charter members. . . Clinton (Ia.) Park board to build mny course.

Glenn F. Welsch leaves Philipsburg (Pa.) CC to become pro-mgr. of A. W. Pettibon's Raccoon Creek course at Rochester, Pa. . . . Sam Snead can't make up his mind whether to defend his British

Golfdom

Open title this year or play for a chunk of George S. May's \$30,000. . . . British Open and Tam O'Shanter dates conflict. . . . Club Managers learned at their convention liquor prices won't rise because high cost of living has reduced liquor demand. . . . Managers also were told electronic cooking is coming in and it's so fast it cooks food before the member can tuck his bib up.

New York Met District Club Managers visit each other's clubs and make frank expert constructive criticisms. . . . The service really is worth money to the clubs whose managers belong. . . . Leonard Crawley of British Walker Cup 1932-34-38 teams and a member of the British Walker Cup team selection group this year is visiting in Pinehurst. . . . Carnoustie will not rope off the galleries for this year's British amateur championship.

Les Bolstad has been engaged by University of Minnesota as pro. . . . Les is a very capable, progressive instructor who'll probably get ideas of great value to teaching pros from his sessions with faculty members. . . . Amateurs in Sydney, Australia, have started a move to establish a retirement fund for veteran Australian pros. . . . The amateurs are mindful that the older pros had lean going during the war but stuck faithfully to their jobs. . . .

The amateurs also have in mind great combat record of the younger pros which "Golf in Australia" says was unequalled by representatives of any other sporting body.

Spalding's 70th year was the first 12 consecutive months since V-J when sales went entirely to the civilian market. . . . The company's net earnings were \$1,469,935 on sales of \$19,480,017. . . . Denver wants dates for a \$15,000 Open this summer. . . . Larry Gleason now is mgr.-pro at Avalon CC on Catalina Island. . . . He plans a series of attractive tournaments for the Wrigley island resort off Los Angeles.

London (Eng.) Times editorial laments that the food shortage has curtailed supply of tapioca for golf ball centers. . . . One husband and wife won \$1500 in a few weeks in keno games at Tam O'Shanter CC (Chicago district). . . . Old Green Meadow course at Harrison, N.Y. (N.Y. Met district) to be reopened this spring.

Whiffy Cox has resigned as Hempstead GC (N.Y. Met district) to return to Congressional CC, Washington, D.C. . . . Willie Klein in his shop at LaGorce, Miami Beach, has a swell gallery of historic photographs. . . . PGA adopts policy of announcing summer tournament schedule Feb. 1 and winter schedule Sept. 1, accord-



CAN'T MISS on Royerated Greens

Smooth, rich greens for "dead-eye" putting . . . lush, healthy fairways—they're yours with compost produced by a Royer Compost Shredder-Mixer. Save on labor, too—one or two shovellers, depending on size machine, produce 1 to 16 cubic yards per hour of top-quality compost that fights heat, snow mold, and brown patch. The Royer shreds to pea size; mixes in fertiliz-

ers and weed-killing chemicals; removes equipment-damaging debris; aerates; discharges velvety, ready-to-use compost direct to windrow, wheelbarrow, or truck. Send for Bulletin 46.



ROYER FOUNDRY & MACHINE CO.
171 PRINGLE ST., KINGSTON, PA.

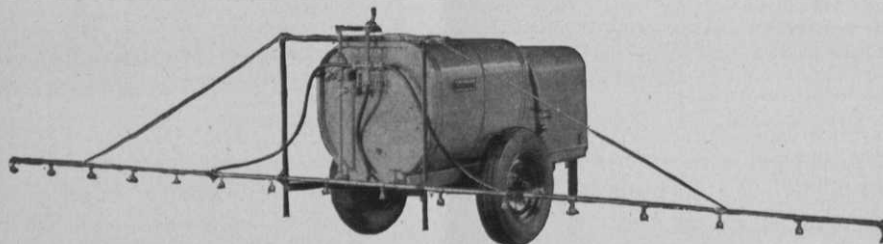
ing to George Schneider, chm., tournament bureau. . . . Previous unexplained delay in announcing dates made it difficult for manufacturers to adjust advertising schedule to newspapers of tournament cities and provided other unnecessary uncertainties. . . . PGA says Fred Corcoran will make headquarters in New York handling promotion and publicity, an "advance man" will be appointed to "smooth out any troublesome details in any forthcoming tournaments" and a tournament supervisor will be appointed to handle pairings, starting times and other details.

Lawson Little and Tommy Armour have been signed as pros by Samuel S. Deutch, owner of Hawthorne Valley CC, Cleveland. . . . Armour will be teaching pro at the club and Little will represent the club at tournaments. . . . Armour is credited by Little as giving him the savvy accounting for Little's four consecutive victories in the U. S. and British amateur championships. . . . Armour maintains Lawson had a great game before he ever came to The Silver Scot and needed only training in "battle tactics". . . . Little's 1935 U. S. Amateur and 1940 U. S. Open titles were won at Cleveland district clubs.

Donald Strand, Westmoreland CC, is new pres., Midwest Greenkeepers Assn. . . . E. J. (Dutch) Harrison signed as pro by CC of York, Pa. . . . Willie Hunter, Riviera

pro, says 284 will win the 1948 Open at his course. . . . Hogan won this year's LA Open at Riviera with 280. . . . Lloyd Mangrum says among all South American players he saw on his tour the Argentinian amateur Mario Gonzales is the most proficient scrambler. . . . Lloyd reports it's tough for an Argentinian pro to hit American earning figures because of the number of pros at each Argentinian club. . . . At Martin Pose's club, the Jockey club, there are 6 pros. . . . The money's split up too many ways to give Martin, an exceptionally competent and likeable fellow, the income he'd have at a comparable job in the U. S.

Minikahda, the famed and splendidly operated Minneapolis club, had a net income for 1946 of \$12,738 after adding \$12,000 to the Reserve for Postwar Repairs and Renewals and deducting \$7,180 for depreciation. . . . The club now has \$42,000 in its postwar reserve fund. . . . Hillcrest CC (K.C. district) has ruled out "service charge" bonuses on monthly salaries of employees and authorized tipping. . . . Bill Mangin, winner of the wartime North African championship and \$1,000 first prize money, now is gen. mgr.-sec., Aldepress CC (N.Y. Met district). . . . Ben Parola has been signed as Aldepress pro and Jack Van Valen, formerly of Englewood (N.J.) CC as gkpr.



● The Hardie Folding Weed Spray Boom shown above is available in different sizes and can be fitted to any Hardie Sprayer. It saves time, labor, material in weed control spraying.

The size of boom and number of nozzles should be selected with reference to the size of the spray pump. Write for complete specification data on Hardie Sprayers.

THE HARDIE MFG. COMPANY

Los Angeles, Calif. HUDSON, MICH, Portland, Oregon
Export Dept. Book Tower Detroit 26

Hardie
Dependable Sprayers



PERFECT AGITATION · COMPLETE LUBRICATION

Bobby Locke is coming to U. S. with Sam Snead after their South African matches. . . . Locke will play in the Masters, U.S. Open and events in between. . . . Henry Cotton named capt., British Ryder Cup team to resume international pro matches in U. S. this year. . . . British pros want Ryder Cup matches late so they can play on U. S. winter circuit. . . . Dayton, Delmonte and other spots want the event but want it earlier. . . . R. McKenzie, E. Cawsey, C. A. Whitcome, George Duncan and W. H. Davies are British Ryder cup selection committee.

There's talk about expanding Walker Cup amateur play to include teams from nations other than U. S. and Britain. . . . Any other nation can challenge for the cup according to terms its donors, George H. Walker, made in 1922 when he presented the cup to the USGA. . . . Teams from other nations also could compete for the women's amateur international trophy, the Curtis cup.

Bill Mehlhorn signed as pro by new Brandywine club, Wilmington, Del. . . . Old Iron Rock course near Maple Shade, N. J. reorganized as Crest Hollow CC. . . . Four-day gap between National Open at St. Louis and PGA at Detroit causes some to wonder how players will stand the close high pressure of the pro championship fol-

lowing the No. 1 tournament. . . . The cheery veteran amateur Woody Platt says any amateur or pro who squawks about the draw is wrong. . . . "If you can't win the final you might as well know it Monday so you can get back on your job," Woody told Earl Eby, Philadelphia sports writer.

Let there be rejoicing and dancing in the streets, there's a new daughter—the second—in the family of Mr. and Mrs. Marty Lyons. . . . Marty is Llanerch CC (Phila. district) pro and Philly PGA pres. . . . Golf Association of Philadelphia and Philadelphia Women's GA are celebrating their 50th anniversaries this year. . . . So is the Country Club of Atlantic City, N. J.

Mike Scanlan, who has operated the Gedney GC, White Plains, N.Y., has bought the King's Ridge course, Purchase, N. Y. . . . Scanlan will operate the course, which has been closed for 5 years, as Green Valley CC. . . . He did a swell job of fixing up the course and clubhouse. . . . Gedney is reopening as a private club after considerable alteration and improvement. . . . A swimming pool has been added. . . . Both Gedney and Green Valley will be maintained by Golf & Maintenance Corp., Purchase, N. Y. . . . G&M Corp. is headed by Edward P. Brady, supervisor of Pelham-Split Rock GC 36-hole City of New York golf plant.



*Protect your greens,
Do other jobs, too.
IRON AGE Sprayers
Make it easy for you.*

FARQUHAR
IRON AGE
YORK, Pa.

ESTATE SPRAYER

Designed for efficient, economical and versatile operation.

The modern, sturdy, easy to handle
IRON AGE Estate Sprayer provides:

- . . . Protection for shrubbery, bushes, lawns, greens.
- . . . Complete coverage to areas usually inaccessible.
- . . . A spraying unit for whitewashing barns, disinfectant work and similar jobs.

Spray Pump—4 gallon per minute capacity at pressures up to 350 pounds maximum. Many other sizes and types of sprayers available with pumps up to 50 gallons per minute capacity.

Write TODAY for complete information.

SPRAYERS • DUSTERS • PLANTERS
TRANSPLANTERS • DIGGERS • WEEDERS
CONVEYORS • JUICE PRESSES • SPECIAL MACHINERY

Farquhar

IRON AGE

FARM. EQUIPMENT DIVISION



A. B. FARQUHAR COMPANY
3434 Duke Street, York, Pennsylvania