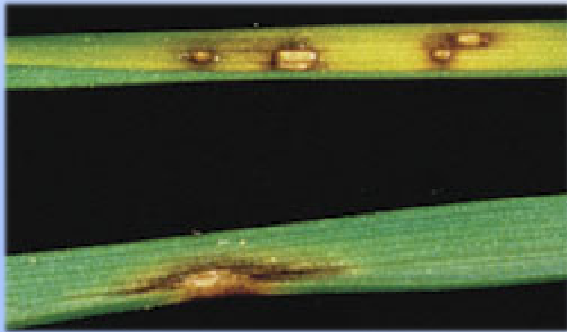


Bipolaris Summer Leaf Spot.



Bipolaris Summer Leaf Spot, with the very distinctive foliar lesions.

OTHER NAMES.

Heminthosporium Leaf Spot. *Bipolaris sorokiniana* (Latin). « *Bipolaris, tache de la feuille* » (French).

SUSCEPTIBLE SPECIES.

Kentucky bluegrass.

LIKELY LOCATION.

Golf course fairways and rough. Parks. Residential home lawns. Sports fields.

IDENTIFICATION.

- Turf becomes thin, and seems to thin out or « *melt* ».
- Foliar lesions (small leaf spots), that are oval-shaped and dark-coloured with a light-coloured centre, are quite visible on the leaves.
- Turf also seems to fade and decline with an indistinct shape.



CONDITIONS FAVOURING DISEASE DEVELOPMENT.

- A series of alternating cycles of drought conditions followed by an abundance of moisture in the thatch layer.
- High temperatures occurring for an extended period – exceeding 21 to 35°C (70 to 95°F).
- This disease is exacerbated every time a herbicide is used that contains the ingredients 2,4-D or mecoprop.

CHEMICAL CONTROL.

- **Banner ® MAXX.** 14 days.
- **Compass ™ 50WG.** 14 to 21 days.
- **Daconil ® Weather Stik.**
- **Daconil ® Ultrex.** 7 to 14 days.
- **Heritage ™ MAXX.** 14 to 28 days.
- **Rovral ® Green GT.** 14 days.

PREVENTIVE PRACTICES.

- Select improved varieties of Kentucky bluegrass that have demonstrated good to excellent resistance to this disease.

The improved varieties of Kentucky bluegrass that have good to excellent resistance to *Bipolaris Summer Leaf Spot.*

Abbey	NuGlade
Arcadia	Raven
Arrow	Rugby II
Award	Rush
Baron	SR-2100
Everest	SR-2284
Impact	Sudden Impact